

Figure 1: Configurable Parts

Item Number	Description	Quantity	Bubble Seq No
067939	Handle	1	1
B-701594-00	Strap, Contents Indicator	1	2
B-701599-00	Screw #6-19 X 3/4 Long	2	3
067941	Handle, Pull, Contents Indicator	1	4
067940	Pad, Non-Stick	1	5
B-775028-00	Hitch Pin	1	6
068816	Back Label, English	1	7
10000708	Back Label, International (Symbolic)	1	
B-701598-00	Screw #6-19 X 1/2 Long	9	8
067943	Indicator Plate	1	9
067942	Spring, Contents Indicator	2	10
067937	Cover, Back	1	11
B-702007-00	Hose Barb, Plastic	2	12
B-701597-00	C-Clip	2	13
B-701586-00	Quick-Connect, Umbilical (includes item 15)	1	14
Reference	Nut, Quick-Connect (included in item 14)	1	15
067938	Cover, Front	1	16
067936	Knob Assembly	1	17
067876-SV	Valve 4:1 Conserver Assembly	1	18
20553105	Female QDV Assembly	1	19
B-775260-00	QDV Lip Seal	1	
15081333	Vent Tube	1	20
10000664-SV	Service Bottle	1	21

Figure 2: Conserver

Item Number	Description	Quantity	Bubble Seq No
067876-SV	Valve 4:1 Conserver Assembly (includes items 21-24)	1	20
6-777736-00	Filter Screen	1	21
B-778167-00	Barbed Hose Fitting, 1/16 inch	2	22
B-778157-00	Barbed Hose Fitting, 1/8 inch	1	23
B-701685-00	Barbed Nylon Elbow, 1/8 inch	1	24
B-701585-SV	Tube, Silicon, 1/8 ID X 2.88 inches	2	25
B-701975-00	Spring, Hose Support	2	26
B-701584-SV	Urethane Tube, 1/16 ID X 7.5 inches	1	27
B-701582-SV	Urethane Tube, 1/16 ID X 2.0 inches	1	28
B-701587-00	Check Valve	1	29
B-701583-SV	Urethane Tube, 1/16 ID X 3.0 inches	2	30
B-701526-00	T-Connector	1	31

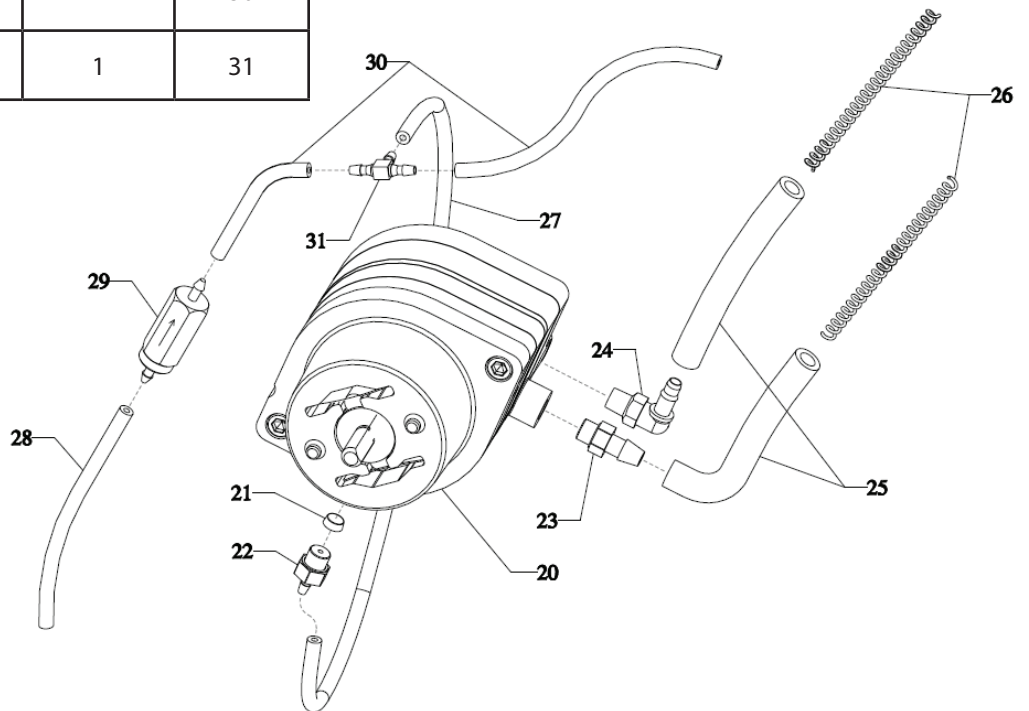


Figure 2: Conserver

